

▶ Vinyl Fence & Railing Hardware

Hinges

Latches

Magnetic Pool Latches

Drop Rods

Handles

Post Stiffeners

Braces

Accessories



▶ CornerStone® Self-Closing Nylon Hinges



CornerStone®
the **MILLION**
Cycle Hinge*

Pictured: CornerStone® Self-Closing Adjustable Hinge.
CH200F-SD-BK (Black). Fits Square Profiles.

For Vinyl Gates

The durability of glass-filled nylon along with high quality manufacturing and design, make the CornerStone® an ideal choice when you are searching for a very strong, easy-to-install and cost-effective self-closing hinge. With a variety of options available, you will be assured that you have the right hardware for the right application.

- ▶ **Heavy Duty** Commercial Grade
- ▶ Glass-filled nylon construction for superior **strength, durability** and **low maintenance**
- ▶ No rusting or staining

Ltd
LIFETIME
Warranty!

Available in Black or White

You Choose the Screws

- ▶ Self-threading stainless screws for vinyl applications without stiffeners
- or
- ▶ Self-drilling stainless screws for applications that use stiffeners

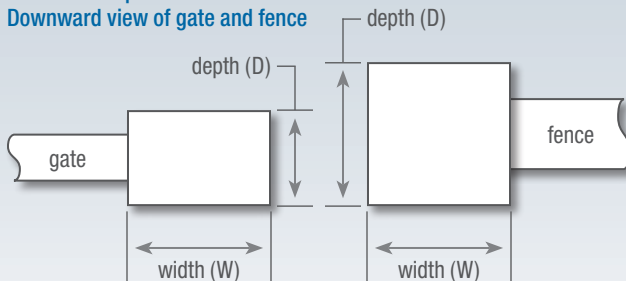
Easy Tension Adjustment

- ▶ Just push down and turn. A one-step process that is quick and avoids stripping. **Allen wrench included.**



Easy and
Convenient!

Width and Depth Orientation:
Downward view of gate and fence

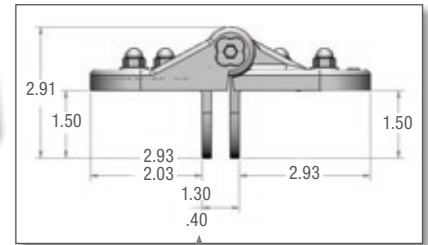


For reference: A "standard" size flange is generally 3" to 3 1/2" deep (D), while a "narrow" size flange is generally 1 1/4" to 1 1/2" deep (D)

* CornerStone® springs tested to 1 million weighted cycles on a 6' x 4' 75 lb privacy gate

CornerStone® Series Self-Closing Nylon Hinges

CornerStone® Fully Adjustable Hinge



Patented

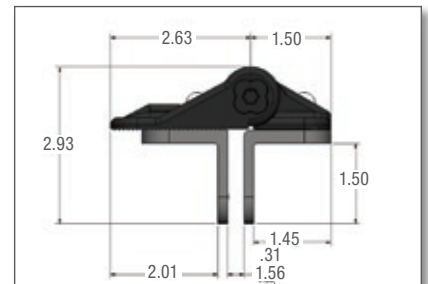
Double dimensions indicate range of adjustability

- CH300F-BK** Black w/stainless steel self-threading screws included
- CH300F-WH** White w/stainless steel self-threading screws included
- CH300F-SD-BK** Black w/stainless steel self-drilling screws included
- CH300F-SD-WH** White w/stainless steel self-drilling screws included

- ▶ Both flanges: 4.25"(H) x 2.88"(W) x 1.50"(D)
- ▶ Back plates allow horizontal and vertical adjustability
- ▶ Produced with durable glass-filled nylon
- ▶ 1/4" Allen wrench **included** for tension adjustment
- ▶ 20 pair per case @ 42lbs

Point-Load
Tested to
1500 lbs
per pair!

CornerStone® Medium Size Fully Adjustable Hinge



Double dimensions indicate range of adjustability

Ideal for Narrow Gate Frames Fits Square Profiles

- CH200F-SD-BK** Black w/stainless steel self-drilling screws included
- CH200F-SD-WH** White w/stainless steel self-drilling screws included

- ▶ Horizontally adjustable up to 1 1/4"
- ▶ Vertically adjustable up to 1/2"
- ▶ Fits both right and left hand applications
- ▶ 20 pair per case @ 40lbs

Point-Load
Tested to
1000 lbs
per pair!

Call Us: (813) 988-2628

Email Us: fence@nationwideindustries.com

Visit Our Web: www.nationwideindustries.com

▶ CornerStone® Self-Closing Nylon Hinges

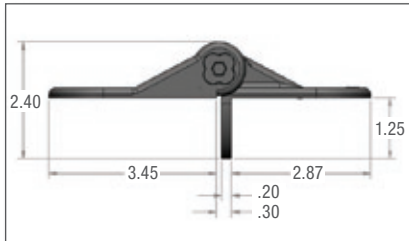
CornerStone® Series Self-Closing Nylon Hinges

CornerStone® Horizontally Adjustable Hinge



Slotted, serrated holes for horizontal holding power

Patented



- CH300H-BK Black w/stainless steel self-threading screws included
- CH300H-WH White w/stainless steel self-threading screws included
- CH300H-SD-BK Black w/stainless steel self-drilling screws included
- CH300H-SD-WH White w/stainless steel self-drilling screws included

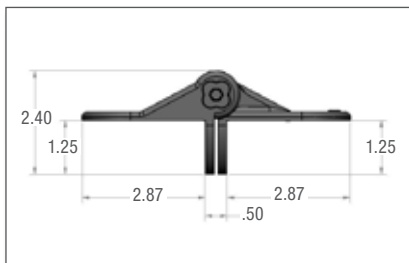
- ▶ Both flanges: 4.25"(H) x 2.88"(W) x 1.25"(D)
- ▶ Produced with durable glass-filled nylon
- ▶ 1/4" Allen wrench **included** for tension adjustment
- ▶ 20 pair per case @ 24lbs

Point-Load Tested to 1200 lbs per pair!

CornerStone® Fixed Position 4" Hinge



Patented



- CH300N-BK Black
- CH300N-WH White
- ▶ Both flanges: 4.25"(H) x 2.88"(D) x 1.25"(D)
- ▶ Produced with durable glass-filled nylon
- ▶ 1/4" Allen wrench **included** for tension adjustment
- ▶ Stainless steel screws included
- ▶ 20 pair per case @ 31lbs

Point-Load Tested to 950 lbs per pair!

Keystone® / CornerStone® Gate Kit

Includes 1 Pair of CH300F-SD-BK (page 1)
1 KLADV-P2-BK (page 9) and 1 NW314 (page 12)

NW6131-26

- ▶ 1 kit per case @ 3.5lbs

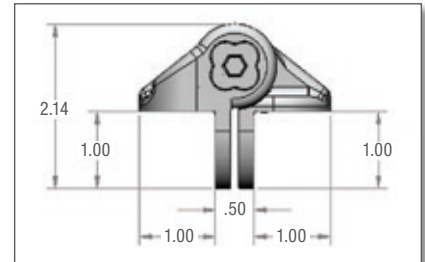


CornerStone® Series Self-Closing Nylon Hinges

CornerStone® 4" Hinge



Patented

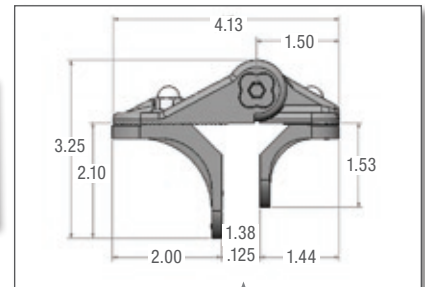


- CH100N-BK Black w/stainless steel self-threading screws included
- CH100N-WH White w/stainless steel self-threading screws included
- CH100N-SD-BK Black w/stainless steel self-drilling screws included
- CH100N-SD-WH White w/stainless steel self-drilling screws included

- Both flanges: 1"(W) x 1"(D)
- ▶ Produced with durable glass-filled nylon
- ▶ 1/4" Allen wrench **included** for tension adjustment
- ▶ 20 pair per case @ 19lbs

Point-Load Tested to 1000 lbs per pair!

CornerStone® Round Post Fully Adjustable Hinge for Chain Link Gates



Double dimensions indicate range of adjustability

CH200FR-BK Black

- ▶ Shims included to fit hinge to different gate and post sizes
- ▶ Horizontally adjustable up to 1 1/4"
- ▶ Vertically adjustable up to 1/2"
- ▶ Fits both right and left hand applications
- ▶ Includes steel self-drilling screws
- ▶ 20 each per case @ 40lbs

Tube Size Chart

Gate Frame Sizes	Fence Post Sizes
1 3/8"	1 7/8" / 2"
1 5/8"	2 3/8"
	2 5/8"
	2 7/8"

Point-Load Tested to 1000 lbs per pair!

▶ Vinyl Gate Hinges – Self-Closing

Unless otherwise noted, all hardware is 300 Series Stainless Steel with marine grade powder coat paint.

Adjustable Stainless Steel Self-Closing Hinges Standard to Standard



NW38952SCR-BCP Black
NW38952SCR-WCP White

- ▶ Both flanges: 3"(H) x 3"(W) x 3"(D)
- ▶ Horizontally adjustable
- ▶ Stainless steel screws included
- ▶ 12 pair per case @ 25lbs

Standard to Narrow

NW38953SCR-BCP Black
NW38953SCR-WCP White

- ▶ Post flange: 3"(H) x 3"(W) x 3"(D)
- ▶ Gate flange: 3"(H) x 3"(W) x 1.25"(D)
- ▶ Horizontally adjustable
- ▶ Stainless steel screws included
- ▶ 12 pair per case @ 15lbs

Adjustable Stainless Steel/Nylon Self Closing Hinges Narrow to Narrow



HBH1SC-SSB Black
HBH1SC-SSW White

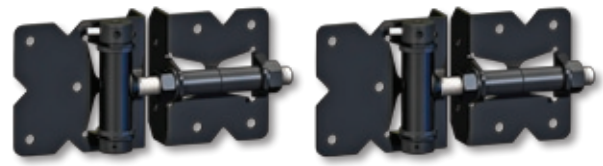
- ▶ Both flanges: 3"(H) x 3"(W) x 1.5"(D)
- ▶ Horizontally adjustable
- ▶ Stainless steel screws included
- ▶ 20 pair per case @ 27lbs

NEW!
Hybrid
Stainless Steel
and Nylon

At Nationwide Industries:

- ▶ We have ample warehoused stock.
- ▶ We have an efficient and friendly customer service department.
- ▶ We are a company that consistently achieves the right balance of price and quality.

Adjustable Stainless Steel Self-Closing Hinges Narrow to Narrow



NW171SCP-SSB Black
NW171SCP-SSW White

- ▶ **More Durable Design**
- ▶ **Stronger Spring**
- ▶ **Larger Holding Pins**
- ▶ **Easier Tension Adjustment with Enclosed Allen Wrench**

New and Improved!

- ▶ Post flange: 3.5"(H) x 3.5"(W) x 1.25"(D)
- ▶ Gate flange: 3.5"(H) x 2.75"(W) x 1.25"(D)
- ▶ Horizontally adjustable
- ▶ Enclosed spring with tension adjustment
- ▶ Stainless steel screws included
- ▶ 12 pair per case @ 35lbs

Narrow to Narrow



NW171NASC-SSB Black
NW171NASC-SSW White
NW171NASC-SSRC Copper

- ▶ Both flanges: 3.5"(H) x 3.5"(W) x 1.25"(D)
- ▶ Horizontally adjustable
- ▶ Enclosed spring with tension adjustment
- ▶ Stainless steel screws included
- ▶ 12 pair per case @ 37lbs

**Special
Finish
Available!**

Standard to Narrow

NW171NASCA-SSB Black
NW171NASCA-SSW White
NW171NASCA-SSRC Copper

- ▶ Post flange: 3.5"(H) x 3.5"(W) x 3.5"(D)
- ▶ Gate flange: 3.5"(H) x 2.75"(W) x 1.25"(D)
- ▶ Horizontally adjustable
- ▶ Enclosed spring with tension adjustment
- ▶ Stainless steel screws included
- ▶ 12 pair per case @ 42lbs



Brushed Copper Finish
may be ordered in less
than box quantity.

▶ Vinyl Gate Hinges – Self-Closing & Non Self-Closing

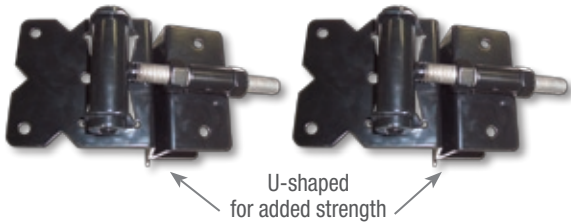
Adjustable Aluminum/Zinc Self-Closing Hinges Fully Adjustable Hinge

NW093V-26 Black
NW093V-56 White



- ▶ Post flange: 5" (H) x 3.88" (W) x 1.62" (D)
- ▶ Gate flange: 5" (H) x 3" (W) x 1.62" (D)
- ▶ Aluminum leaf with Zinc die cast back plate
- ▶ Back plates allow horizontal and vertical adjustability
- ▶ Enclosed spring with tension adjustment
- ▶ Stainless steel screws included
- ▶ 10 pair per case @ 39lbs

Adjustable Stainless Steel Self-Closing Hinges Wrap Around



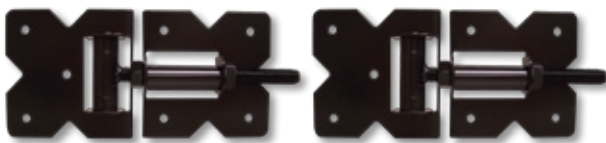
U-shaped
for added strength

NW6082-SSB Black - for 1 3/4" gate frames (special order only)
NW6082A-SSB Black - for 1 1/2" gate frames (special order only)
NW6082B-SSB Black - for 2" gate frames (special order only)

- ▶ Post flange: 3.5" (H) x 3.5" (W) x 3.5" (D)
- ▶ Horizontally adjustable
- ▶ Enclosed spring with tension adjustment
- ▶ 12 pair per case @ 34lbs
- ▶ 8 case minimum order

Adjustable Stainless Steel Non Self-Closing Hinges

Standard to Narrow

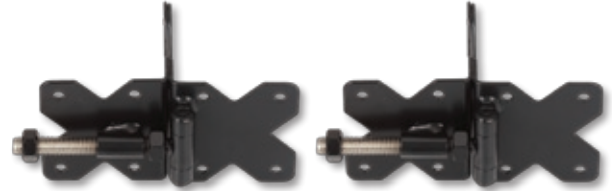


NW172-SSB Black

- ▶ Post flange: 4" (H) x 4" (W) x 4" (D)
- ▶ Gate flange: 4" (H) x 4" (W) x 1.5" (D)
- ▶ Horizontally adjustable
- ▶ Stainless steel screws included
- ▶ 12 pair per case @ 49lbs

Adjustable Stainless Steel Non Self-Closing Hinges

Standard to Standard



NW38950NSSB Black
NW38950NSSW White

- ▶ Both flanges: 3.5" (H) x 3.25" (W) x 3.25" (D)
- ▶ Minimum gate frame or post size is 3.5" (W) x 3.5" (D)
- ▶ Horizontally adjustable
- ▶ Stainless steel screws included
- ▶ 12 pair per case @ 43lbs

Standard to Narrow



NW38951NSSB Black
NW38951NSSW White

- ▶ Post flange: 3.5" (H) x 3.25" (W) x 3.25" (D)
- ▶ Gate flange: 3.5" (H) x 3.25" (W) x 1.5" (D)
- ▶ Horizontally adjustable
- ▶ Stainless steel screws included
- ▶ 12 pair per case @ 38lbs

SV38965-BK Black
SV38965-WH White

Similar to NW38951NSS above but
with Zinc plate steel and Narrow to
Narrow flanges

Adjustable Stainless Steel/Nylon Non Self-Closing Hinge

Narrow to Narrow



HBH1-SSB Black
HBH1-SSW White

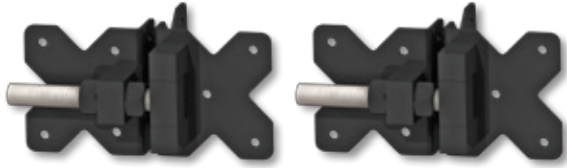
- ▶ Both flanges: 3" (H) x 3" (W) x 1.5" (D)
- ▶ Horizontally adjustable
- ▶ Stainless steel screws included
- ▶ 20 pair per case @ 26lbs

NEW!
Hybrid
Stainless Steel
and Nylon

▶ Vinyl Gate Hinges – Non Self-Closing

Adjustable Stainless Steel Non Self-Closing Hinges

Heavy Duty Standard to Standard



NW38954-SSB Black

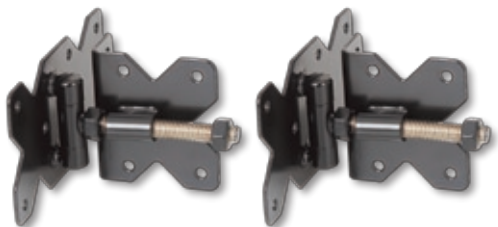
- ▶ Both flanges: 3.5"(H) x 3.12"(W) x 3.12"(D)
- ▶ Heavy Duty 5/8" threaded rod
- ▶ Horizontally adjustable
- ▶ Stainless steel screws included
- ▶ 10 pair per case @ 45lbs

Heavy Duty Standard to Narrow

NW6159-SSB Black

- ▶ Post flange: 3.5"(H) x 3.12"(W) x 3.12"(D)
- ▶ Gate flange: 3.5"(H) x 3.12"(W) 1.41"(D)
- ▶ Heavy Duty 5/8" threaded rod
- ▶ Horizontally adjustable
- ▶ Stainless steel screws included
- ▶ 10 pair per case @ 45lbs

Wall Mount



NW38951NWV-SSB Black

NW38951NWV-SSW White

- ▶ Gate flange: 3.5"(H) x 3.25"(W) x 3.25"(D)
- ▶ Wall flange: 3.5"(H) x 6.38"(W)
- ▶ Horizontally adjustable
- ▶ Stainless steel screws included
- ▶ 12 pair per case @ 39lbs

Call Us: (813) 988-2628

Email Us: fence@nationwideindustries.com

Visit Our Web: www.nationwideindustries.com

Adjustable Stainless Steel Non Self-Closing Hinges

Butterfly Hinge

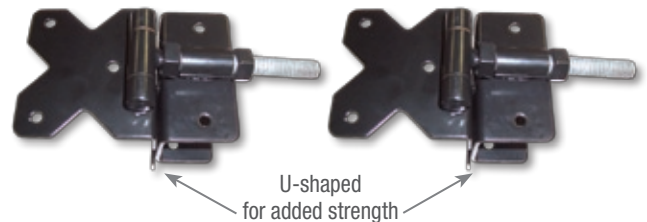
NW38943SSB Black

NW38943SSW White

- ▶ 8" Hinge with a traditional wood hardware look
- ▶ Stainless steel screws included
- ▶ 20 pair per case @ 45lbs



Wrap Around



U-shaped
for added strength

NW38955-SSB Black (special order only)

NW38955-SSW White (special order only)

- ▶ Post flange: 3.5"(H) x 3.5"(W) x 3.5"(D)
- ▶ For 1 3/4" gate frames only
- ▶ Horizontally adjustable
- ▶ Stainless steel screws included
- ▶ 12 pair per case @ 38lbs
- ▶ 8 case minimum order

Super-Duty 3-Sided



Ideal for
Post & Rail
or Commercial
Applications!

Matching latch
(NW6057-BK)
found on page 11

NW6056-BK Black

- ▶ Use for 5" x 5" post and fence gate only
- ▶ Both flanges: 3.5"(H) x 3.5"(W) x 5"(D)
- ▶ Horizontally adjustable
- ▶ Packaged with stainless thru bolts, nuts and washers
- ▶ 5 pair per case @ 38lbs

Introducing AQUALATCH™

The MAGNETIC Gate Safety Lock with **SAFE-ALERT™**

20" Height

Enhanced Knob Design

45 Degree Key Hole Angle
Allows easy access to the key hole

MILLION CYCLE Warranty!

10" Height

Flush Surface Connections
No more overlapping sections on the housing

SAFE-ALERT™
The AquaLatch is the only pool latch with Safe-Alert! A visible red alert area under the release knob appears any time the latch is not engaged.

2" Vertical Adjustment

1-1/2" Horizontal Adjustment

Heavy Duty Screw Thread for easy adjustment

Handle Option*
Ideal for taller gates

Leveling Keeper
Multi-directional leveling capabilities for gates installed out of plumb

Thru-Hole in Keeper
New pass-through design eliminates water retention in keeper

AQUALATCH™... magnetic closing power, easy installation and guaranteed to last!

- Heavy duty construction
- Beautiful, modern design
- Multi-directional leveling for misaligned gates
- Excellent horizontal & vertical adjustability
- Fits right or left handed gates
- Industry-BEST Warranty

*Please check local pool codes prior to use.

Ordering Information:

Number	Color	Description	Height	Qty/Pkg
AQUA-10-BK	Black	AquaLatch with Standard Keeper	10"	20 each
AQUA-10-WH	White	AquaLatch with Standard Keeper	10"	20 each
AQUA-10H-BK	Black	AquaLatch with Handle/Keeper	10"	20 each
AQUA-10H-WH	White	AquaLatch with Handle/Keeper	10"	20 each
AQUA-20-BK	Black	AquaLatch with Standard Keeper	20"	20 each
AQUA-20-WH	White	AquaLatch with Standard Keeper	20"	20 each
AQUA-20H-BK	Black	AquaLatch with Handle/Keeper	20"	20 each
AQUA-20H-WH	White	AquaLatch with Handle/Keeper	20"	20 each

Adapter available for use with round posts.

Patent Pending

▶ Magnetic Pool Gate Latches

Magnetic Pool Safety Latches

The Protector®

- NW276NE-26 Black
- NW276NE-56 White

Key cylinder at 45° for easy access and protection from water and debris

Latch height is 19.5"



19.5" latch height meets pool access requirements when properly installed*

- ▶ Horizontal and vertical adjustment up to 2"
- ▶ Reversible for right-hand or left-hand use
- ▶ Easy-grip release knob
- ▶ Key cylinder is at a 45° angle for easy access
- ▶ Extruded aluminum body with glass-filled nylon components
- ▶ Packaged in heavy-duty poly bag with stainless screws
- ▶ 20 each per case @ 30lbs

The Protector® Jr.

- NW308-26 Black
- NW308-56 White

Used for applications with taller fence profiles



Latch height is 10"

- ▶ Horizontal & vertical adjustment up to 2"
- ▶ Reversible for right-hand or left-hand use
- ▶ Total latch height is 10"
- ▶ Easy-grip release knob
- ▶ Key cylinder is at a 45° angle for easy access
- ▶ Extruded aluminum body with glass-filled nylon components
- ▶ Packaged in heavy-duty poly bag with stainless screws
- ▶ 20 each per case @ 23lbs

Why partner with Nationwide Industries?

Because we:

- ▶ Ship from available stock the same day you order if placed before 12 noon EST
- ▶ Have ample warehoused stock
- ▶ Have an efficient & friendly customer service department
- ▶ Consistently achieve the right balance of price & quality
- ▶ Use an automotive industry-based quality control system
- ▶ Have a broad line of hardware to meet all of your hardware needs

Join us, and we'll show you what we can do!

Round Post Adapter for Chain Link

NW6149-BK

- ▶ Shims included in adapter kit to fit all Protector® and AquaLatch™ for different pipe sizes
- ▶ See Tubing Size Chart on below
- ▶ 20 each per case @ 9lbs

Tubing Size Chart

Gate Frame Sizes	Fence Post Sizes
1 3/8"	1 7/8" / 2"
1 5/8"	2 3/8"
	2 5/8"
	2 7/8"

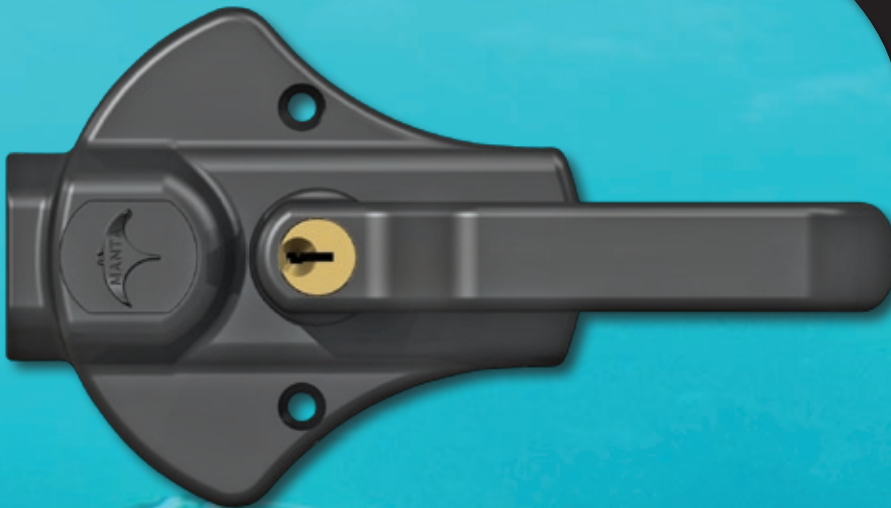


***Please check local pool safety codes for proper installation**

Introducing



The **MAGNETIC**
Latch for **VINYL** Gates!



**MILLION
CYCLE
Warranty!**

The patent-pending MANTA™ gate lock is an exciting new alternative to enhance gates, and the overall image of any fence.

The MANTA™ presents a great balance of elegance and functionality. This breakthrough design offers the best of all worlds. Attractive and easy to use handles, key locks providing accessibility from the front or back of a gate, and the powerful positive-locking feature of the Nationwide Industries magnetic system.

Magnetic, self-latching, key-lockable with an elegant look that will compliment any style.

- ▶ Glass-filled nylon material for low maintenance, strength and durability.
- ▶ Locks & unlocks from either side
- ▶ Reversible for left or right hand use without changing components
- ▶ Easy to install
- ▶ Fits gate frames from 1-1/2" to 5"
- ▶ Also great for some aluminum or wood gate applications
- ▶ Re-keyable to home locks



Ordering Information:

Number	Quantity	Weight
MANTA-L-BK	12 per box	21 lbs
MANTA-L-WH	12 per box	21 lbs

▶ Vinyl Gate Latches

Keystone Advantage® Series

Heavy Duty Design with Weather Resistant Glass-Filled Nylon Construction - Patented



All Keystone® Latches are available in Nylon or Metal and in Black or White

Two-Sided Lockable Latch

- KLADV-P2-BK Black (Nylon)
- KLADV-P2-WH White (Nylon)

- ▶ Locking feature accessible from both sides
- ▶ Reversible for right-hand or left-hand use
- ▶ Glass-filled nylon housing
- ▶ Thumb release button on one side, gravity latch lever on opposite side
- ▶ Stainless steel screws included
- ▶ 20 each per case @ 23lbs



All Keystone® Advantage 2-Sided Latches are packed with a durable Plastic Marking Template for installation.

- KLADV-M2-BK Black (Zinc diecast)
- KLADV-M2-WH White (Zinc diecast)

- ▶ Same as KLADV-P2 but with zinc die cast housing
- ▶ 20 each per case @ 48lbs



Heavy Duty Striker Design on every Keystone® Latch

Spindle Adaptor

KLADV-SpinAdapt

Extention Kit allows Two-Sided Keystone Advantage to be used on posts over 5" wide

One-Sided Lockable Latch

- KLADV-P1-BK Black (Nylon)
- KLADV-P1-WH White (Nylon)

- ▶ Features latch side only
- ▶ 20 each per case @ 17lbs

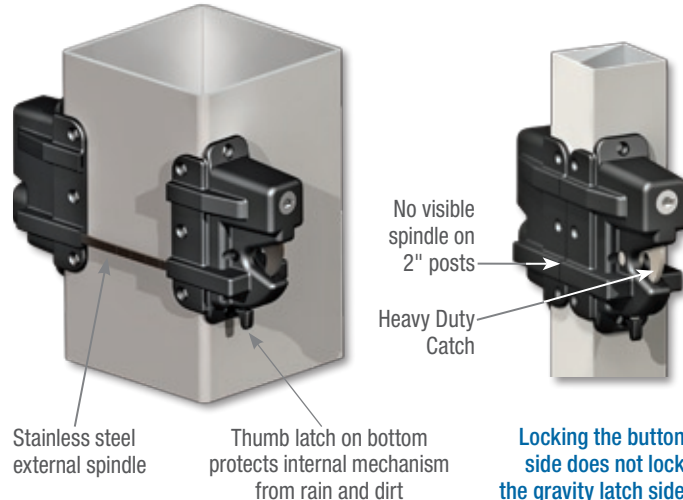
- KLADV-M1-BK Black (Zinc diecast)
- KLADV-M1-WH White (Zinc diecast)

- ▶ 20 each per case @ 31lbs



The Keystone® X - eXternal Mount Latch

Best Stainless Steel External Spindle Design in the Industry - Patent Pending



Two-Sided

- KLX-P2-BK Black (Nylon)
- KLX-P2-WH White (Nylon)

- ▶ Marked in 1/2" increments for quick, easy and accurate fitting to post sizes 2" - 5"
- ▶ Flat design safely encloses spindle ends
- ▶ 20 each per case @ 22lbs

No need to drill spindle holes!

One-Sided

- KLX-P1-BK Black (Nylon)
- KLX-P1-WH White (Nylon)

- ▶ Features latch side only
- ▶ 20 each per case @ 15lbs



Keystone® / CornerStone® Gate Kit

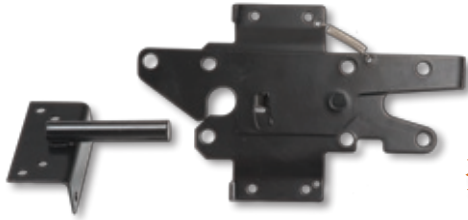
Includes 1 Pair of CH300F-SD-BK (page 1)
1 KLADV-P2-BK (above left) and 1 NW314 (page 12)

NW6131-26

- ▶ 1 kit per case @ 4lbs



Stainless Steel Gate Latch



Special
Finish
Available!

Lockable Both Sides

NW38308NUA-SSB Black

NW38308NUA-SSW White

NW38308NUA-SSRC Copper

- ▶ Strike flange: 1.75"(W) x 3.5"(H) x 1.25"(D)
- ▶ Latch flange: 2.5"(W) x 5.5"(H) x 1.5"(D)
- ▶ Allows entry from both sides
- ▶ Mounts around corner of post and gate frame
- ▶ **Pad-lockable on both sides** – up to 5" post
- ▶ .63" Strike Bar
- ▶ Return spring for reversible mounting
- ▶ Stainless steel screws included
- ▶ 20 each per case @ 36lbs

Lockable One Side

NW38308NU-SSB Black

NW38308NU-SSW White

- ▶ Same as NW38308NUA above but **Pad-lockable on one side only**
- ▶ 20 each per case @ 35lbs

NW38308NU-B Black

NW38308NU-W White

- ▶ Same as NW38308NU above but with Zinc plate steel with Black finish
- ▶ 20 each per case @ 34lbs



Brushed Copper Finish
may be ordered in less
than box quantity.

Stainless Steel Contemporary Gate Latch



NW38310N-SSB Black

NW38310N-SSW White

- ▶ Strike flange: 3.12"(W) x 3.5"(H) x 1.38"(D)
- ▶ Latch flange: 1.88"(W) x 5.5"(H) x 1.5"(D)
- ▶ Mounts around corner of post and gate frame
- ▶ **Pad-lockable on both sides** – Locking slide switch on latch arm
- ▶ Allows entry from both sides
- ▶ Reversible mounting (right or left handed)
- ▶ .63" Strike bar
- ▶ Stainless steel screws included
- ▶ 20 each per case @ 44lbs

Medium Duty Stainless Steel Contemporary Gate Latch



NEW!

NW6157-SSB Black

NW6157-SSW White

- ▶ Strike flange: 3.12"(W) x 3.5"(H) x 1.38"(D)
- ▶ Latch flange: 1.88"(W) x 5.5"(H) x 1.5"(D)
- ▶ Mounts around corner of post and gate frame
- ▶ **Pad-lockable on both sides** – Locking slide switch on latch arm
- ▶ Allows entry from both sides
- ▶ Reversible mounting (right or left handed)
- ▶ Stainless steel screws included
- ▶ 20 each per case @ 22lbs

2-Side Activated Latch



Narrow Strike Flange

NW6068-SSB Black

NW6068-SSW White

- ▶ Strike flange is 2"(W) x 3.5"(H) x 1.38"(D)
- ▶ Allows entry from both sides
- ▶ Mounts around corner of post and gate frame
- ▶ **Pad-lockable on one side**
- ▶ .38" ball-tipped striker bar
- ▶ Stainless steel screws included
- ▶ 40 each per case @ 30lbs

NW6068AL-SSB Black

NW6068AL-SSW White

- ▶ Same as NW6068 above but with a 1 1/2" inch longer thumb latch and return spring

Call Us: (813) 988-2628

Email Us: fence@nationwideindustries.com

Visit Our Web: www.nationwideindustries.com

▶ Vinyl Gate Latches

2-Side Activated Latch



Wide Strike Flange

NW170SB-SSB Black

NW170SB-SSW White

- ▶ Strike bar flange: 3.5"(W) x 3.5"(H) x 1.38"(D)
- ▶ Allows entry from both sides
- ▶ **Pad-lockable on one side**
- ▶ .38" ball tipped strike bar
- ▶ Stainless steel screws included
- ▶ 40 each per case @ 36lbs

Stainless Steel Gravity Latch



NW38210SSB Black

NW38210SSW White

- ▶ Strike flange: 3"(H) x 3"(W) x 1.25"(D)
- ▶ Latch flange: 3"(H) x 3"(W) x 1"(D)
- ▶ Reversible mounting (right or left hand)
- ▶ Mounts around corner of post and gate frame
- ▶ Pad-lockable on one side
- ▶ .38" Strike bar
- ▶ Stainless steel screws included
- ▶ 25 each per case @ 25lbs

Why partner with Nationwide Industries?

Because we:

- ▶ Ship from available stock the same day you order if placed before 12 noon EST
- ▶ Have ample warehoused stock
- ▶ Have an efficient & friendly customer service department
- ▶ Consistently achieve the right balance of price & quality
- ▶ Use an automotive industry-based quality control system
- ▶ Have a broad line of hardware to meet all of your hardware needs

Join us, and we'll show you what we can do!

Heavy Duty Stainless Steel Gravity Latch



1-Sided

Narrow to Narrow

NW6160-SSB Black

- ▶ Strike flange: 3"(H) x 3"(W) x 1.25"(D)
- ▶ Latch flange: 3"(H) x 3"(W) x 1"(D)
- ▶ Reversible mounting (right or left hand)
- ▶ Pad-lockable on one side
- ▶ .40" Strike bar
- ▶ Stainless steel screws included
- ▶ 10 each per case

2-Sided

Standard to Standard

NW6100-BK Black

- ▶ 20 each per case

Narrow to Narrow

NW6161-SSB Black

- ▶ 10 each per case

Super-Duty 3-Sided Stainless Steel Latch



NW6057-BK Black

- ▶ For use on 5" x 5" post and fence gate **only**
- ▶ Flange: 3.5"(H) x 5"(W) x 3.38"(D)
- ▶ Reversible mounting (right or left hand)
- ▶ Pad-lockable on one side
- ▶ Packaged with stainless thru bolts, nuts and washers
- ▶ 10 each per case @ 35lbs

Matching hinge
(NW6056-BK)
found on page 5

Post and Rail Latch



NW175-SSB Black

- ▶ For use on 1 1/2" rail
- ▶ Great for Horse and Cattle gates
- ▶ Stainless steel screws included
- ▶ 12 each per case @ 34 lbs

**Heavy Duty
Spring Loaded
Strike Bar!**

▶ Vinyl Gate Drop Rods and Gate Handles

Heavy Duty Drop Rods

- | | | |
|-----------------------|------------|--|
| NW38305N-24SSB | 24" | Stainless steel
with Black finish
20 each per case @ 55lbs |
| NW38305N-24SSW | | Stainless steel
with White finish
20 each per case @ 55lbs |
| NW38305N-36SSB | 36" | Stainless steel
with Black finish
10 each per case @ 39lbs |
| NW38305N-36SSW | | Stainless steel
with White finish
10 each per case @ 39lbs |
| NW38305N-36B | | Zinc plate steel
with Black finish
10 each per case @ 39lbs |
| NW38305N-36W | | Zinc plate steel
with White finish
10 each per case @ 39lbs |
| NW38305N-48SSB | 48" | Stainless steel
with Black finish
10 each per case @ 47lbs |
| NW38305N-48SSW | | Stainless steel
with White finish
10 each per case @ 47lbs |



- ▶ 5/8" diameter
- ▶ Screws included
- ▶ Dual guides
- ▶ Pad-lockable
- ▶ Retention-ears for theft prevention



Nylon Gate Handle

- NW314S-BK** Black
NW314S-WH White
- ▶ Made with durable glass-filled nylon with UV inhibitors
 - ▶ Flanges are each 1.5" (W) x 1.25" (D) for durable attachment
 - ▶ Overall height is 5" and handle is .75" deep
 - ▶ Very comfortable and easy to grasp
 - ▶ Stainless steel screws included
 - ▶ 200 each per case @ 29lbs
 - ▶ Also available in quantities of 50



Nylon Gate Handle with Bumper

- NW6143S-BK** Black
NW6143S-WH White
- ▶ Made with durable glass-filled nylon with UV inhibitors
 - ▶ Flanges are each 2" (W) x 1.75" (D) for durable attachment
 - ▶ Overall height is 4.5" and handle is 1" deep
 - ▶ Very comfortable and easy to grasp
 - ▶ Stainless steel screws included
 - ▶ 50 each per case @ 25 lbs
 - ▶ Also available in quantities of 10



Rubber pad backing absorbs gate slamming shock, reducing latch wear



6" Stainless Steel Gate Handle



- NW257-SSB** Black
NW257-SSW White
- ▶ Stainless steel screws included
 - ▶ 100 each per case @ 19lbs
 - ▶ Also available in quantities of 50

9" Stainless Steel Gate Handle



Brushed Copper Finish may be ordered in quantities of 12

- NW38396-SSB** Black
NW38396-SSW White
NW38396-SSRC Copper
- ▶ 100 each per case @ 24lbs
 - ▶ Also available in quantities of 50

Have Questions? Need Answers?

Are your needs custom, replacement, or current stock?

- ▶ Call Us: (813) 988-2628
- ▶ Fax Us: (866) 988-3465
- ▶ Email Us: fence@nationwideindustries.com
- ▶ Visit our Web: www.nationwideindustries.com

▶ Vinyl Gate Braces, Post Stiffeners and Accessories

Gate Braces for Vinyl and Wood Fences



Guards Against Sagging and Warping!

NW6132 Black or White

- ▶ Zinc plated steel construction
- ▶ Available in powder-coated black or white
- ▶ Fits 4' x 4' to 6' x 6' gates



Adjustable



Sturdy Attachment Brackets

Galvanized Steel Gate Post Stiffener

Stronger than Conventional Aluminum "I" Beams

- NW6142-072** – 4" Profile 72" Height
- NW6142-084** – 4" Profile 84" Height
- NW6142-096** – 4" Profile 96" Height
- NW6142-108** – 4" Profile 108" Height
- NW6146-072** – 5" Profile 72" Height
- NW6146-072** – 5" Profile 84" Height
- NW6146-072** – 5" Profile 96" Height
- NW6146-072** – 5" Profile 108" Height

- ▶ Cost-effective
- ▶ Packaged in pairs
- ▶ No minimum order requirements

Allows for 2-sided attachment of hardware



Great Alternative to Aluminum!

Stainless Steel Gate Anti-Sag Kit



NW38309-SSM

- ▶ Stainless steel attachment screws included
- ▶ Cable length is 9'
- ▶ 50 each per case @ 33lbs

Stainless Steel Self-Drilling Screws

14X1HEX-SSB Black

14X1HEX-SSW White

- ▶ #14 Hex-head by 1"
- ▶ Stainless steel self-drilling
- ▶ Each packet contains 30 screws



Stainless Steel 13" Gate Spring



NW198-SSB Black

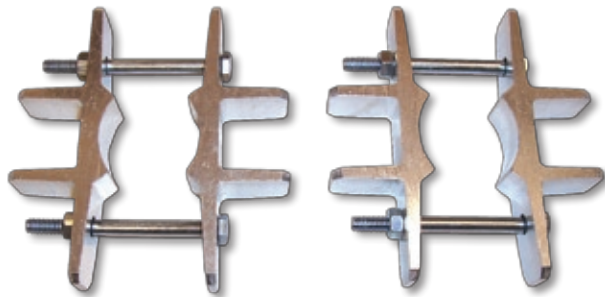
NW198-SSW White

- ▶ Stainless steel screws included
- ▶ 20 each per case @ 42lbs

At Nationwide Industries:

- ▶ We have ample warehoused stock.
- ▶ We have an efficient and friendly customer service department.
- ▶ We are a company that consistently achieves the right balance of price and quality.

Post Mount Bracket Set



NW6011

- ▶ Adapts a 1 5/8" round post for a 4" x 4" vinyl fence post

NW6012

- ▶ Adapts a 1 7/8" round post for a 5" x 5" vinyl fence post
- ▶ Brackets are made of extruded aluminum
- ▶ Each kit includes 2 full brackets with four 3" Stainless steel shoulder bolts and nuts
- ▶ 50 each per case @ 33lbs

Vinyl Railing Support Tower

NW40001-4 – 3 5/8" x 20" Zinc plated steel

NW40001-4SS – 3 5/8" x 20" Stainless steel

NW40001-5 – 4 5/8" x 20" Zinc plated steel

NW40001-5SS – 4 5/8" x 20" Stainless steel

- ▶ All towers have a wall thickness of .110"
- ▶ Will accommodate line, corner and 'T' post applications
- ▶ Includes snug-fit wedge for post thickness variations
- ▶ 8 per case @ 48lbs

3 5/8" dimensions fit a 4" vinyl post
4 5/8" dimensions fit a 5" vinyl post

NW3004 – 3 5/8" x 20" Zinc plated steel

NW3004SS – 3 5/8" x 20" Stainless steel

NW3005 – 4 5/8" x 20" Zinc plated steel

NW3005SS – 4 5/8" x 20" Stainless steel

- ▶ Same as NW40001s above but with concrete anchor and adjustable leveling plate kit



Vinyl Railing Post Mounts

RPM Series



For 4" or 5" Posts



For 4" Posts

All Components Available Individually

4 sides for secure hardware attachment

Easy bracket position adjustability

- ▶ Code compliant within complete railing system
- ▶ Brackets come **attached** to post for easy installation
- ▶ Saves installation time
- ▶ Available in 24", 36" and 42" heights

Leveling Kit and Anchors Available



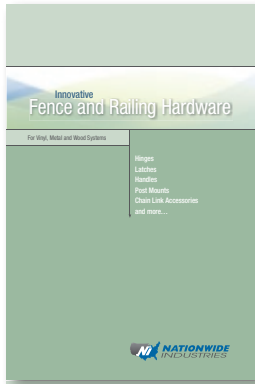
We have taken a popular hinge, latch and handle made of stainless steel and brushed on a real copper finish to provide an exciting new look.

Call Us: (813) 988-2628

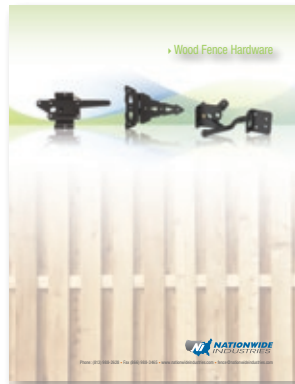
Email Us: fence@nationwideindustries.com

Visit Our Web: www.nationwideindustries.com

Ask about our other Fence Hardware Catalogs



Innovative Fence and Railing Hardware



Wood Fence Hardware



Ornamental Fence Hardware

CornerStone®
The Million Cycle
Self-Closing Nylon Hinges

Keystone® Advantage
Heavy Duty
Key-Lockable Latches

Keystone® X
eXternal Mount
Key-Lockable Latches

OrnaMAG™
Magnetic
Metal Latches

Manta™
Magnetic
Nylon Latches

AquaLatch™
Magnetic Pool
Safety Latches

Protector®
Magnetic Pool
Safety Latches

V-Notch™
Hardware



**VINYL FENCE, DECK AND RAILING
MANUFACTURERS ASSOCIATION**
A Division of the American Fence Association

