

Premium Caps for Wood Posts

Miter-less Wood Caps

These slip-over, Miter-less wood caps are made from a single solid block of mahogany wood. Eliminating the miter joints has solved the age old problem of post caps splitting at the corners. By making the cap out of one solid piece of wood, it has eliminated the need for any glue or staples to hold the cap together.



Traditional

WPC-312-TRD

- ▶ Fits a standard 4 x 4 post measuring 3 1/2" square
- ▶ 45 per case @ 35lbs

WPC-334-TRD

- ▶ Fits a 4 x 4 post measuring 3 3/4" square
- ▶ 45 per case @ 35lbs



Pyramid

WPC-312-PYR

- ▶ Fits a standard 4 x 4 post measuring 3 1/2" square
- ▶ 45 per case @ 35lbs

WPC-334-PYR

- ▶ Fits a 4 x 4 post measuring 3 3/4" square
- ▶ 45 per case @ 35lbs



New England

WPC-312-NWENG

- ▶ Fits a standard 4 x 4 post measuring 3 1/2" square
- ▶ 45 per case @ 35lbs

WPC-334-NWENG

- ▶ Fits a 4 x 4 post measuring 3 3/4" square
- ▶ 45 per case @ 35lbs

WPC-534-NWENG

- ▶ Fits a 6 x 6 post measuring 5 1/2 to 5 3/4" square
- ▶ 20 per case @ 45lbs



theirs



ours



Copper and Stainless Steel Caps

The 20 gauge copper post caps are made of 100% copper and have a natural look that will patina to a green color over time. The stainless steel caps are 20 gauge stainless steel. The caps will fit 4 X 4 and 6 X 6 posts and include 2 screws for mounting.

Copper

WPC-312-COPP

- ▶ Fits a standard 4 x 4 post measuring 3 1/2" square
- ▶ 25 per case @ 6lbs

WPC-534-COPP

- ▶ Fits a 6 x 6 post measuring 5 1/2 to 5 3/4" square
- ▶ 25 per case @11lbs

Stainless Steel

WPC-312-SS

- ▶ Fits a standard 4 x 4 post measuring 3 1/2" square
- ▶ 25 per case @ 6lbs

WPC-534-SS

- ▶ Fits a 6 x 6 post measuring 5 1/2 to 5 3/4" square
- ▶ 25 per case @11lbs



Metal-Wood Combination



WPC-312-COPP
WPC-312-TRD



WPC-312-SS
WPC-312-TRD

4 X 4 Post Size Only

Order a copper or stainless steel cap and a Traditional 4 X 4 Miter-less wood cap for a metal-wood combination.

Copper Plated Stainless Steel Cap

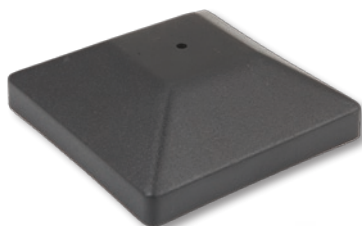
A durable alternative that combines stainless steel with the look of copper.

NW6180-44-CP

- ▶ Fits a 4 x 4 post measuring 3 1/2" square
- ▶ Glues on to post
- ▶ 25 per case @ 6lbs



Plastic Caps



NW287-21

- ▶ Fits a 4 x 4 post measuring 3 5/8" square
- ▶ 500 each per case @ 37lbs

NW298-21

- ▶ Fits a 6 x 6 post measuring 5 3/4" square
- ▶ 200 each per case @ 35lbs

Made of durable HDPE plastic in black.
Logo option available (minimum quantity required)
Also available without top hole (minimum quantity required)

