

★ ★ THE ★ ★
NANTUCKET
POST CAP

2012

2012

American Traditions... American Made.



★ NEW ★
*Prospect Harbor
Low Voltage LED Cap!*

American Selections...

- Post Caps & Finials!
- Arbors & Pergolas!
- Copper & Powder Coated Caps!
- Low Voltage LED Light!
- Solar-Powered Post Cap!
- Lantern Posts!
- Mail Posts!

★ ★ NEW ★ ★
PRODUCTS!



2012
Product CATALOG



ARBORS ★ FINIALS ★ POST CAPS ★ PLANTER BOXES ★ GATES ★ CHAIRS ★ POSTS

1.888.758.7678 ★ WWW.NANTUCKETPOSTCAP.COM

★ NANTUCKET POST CAP LIGHTING ★

Prospect Harbor LED Low Volt Light

NEW PRODUCTS!



*Order the...
Federal Slip Over
Post Cap to Match
These on Your
Non-lighted Posts!*

**The Prospect Harbor
Low Voltage LED Light**
Provides Great Accent Lighting to Your Posts!

Add these one of a kind wooden LED lighted caps to entrances, or light up your entire deck and fence.

These high output LED's accent down the sides of the posts and light up the area surrounding the posts!

- Control with a Remote or Switched Outlet
- Add the Remote Option to Operate with a Wireless Remote



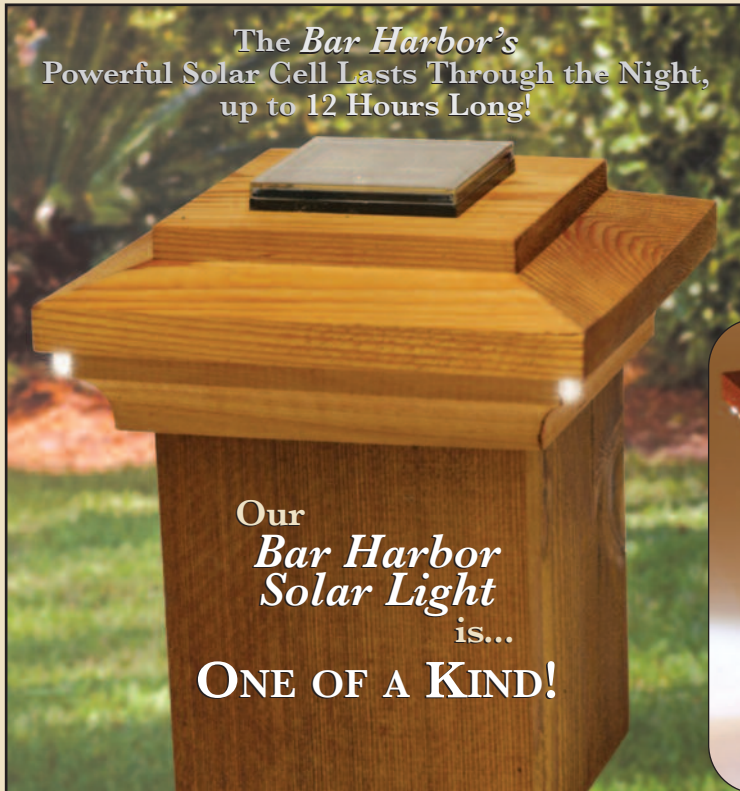
**Order Our
Pre-Packaged
Wiring Kits,
Which Include:**

- 1 Transformer, which will Light up to 2, 7, or 12 Lights
- 100' of Low Voltage Wire
- Optional Remote Control & Remote Driver Box

**Made
in the
USA!**

Bar Harbor Solar Light

Be the First to Own... the Worlds First, Solar-Powered Wooden Post Cap!



The Bar Harbor's
Powerful Solar Cell Lasts Through the Night,
up to 12 Hours Long!

Our
*Bar Harbor
Solar Light*
is...
ONE OF A KIND!

**The Bar Harbor Solar Light Provides
the Perfect Accent to Your Post,
While Providing a Soft Glow to See
Your Way Through the Night!**

- Each Solar Cap is Fitted with Four Long-Life, Bright L.E.D.'s

SOLAR

- Available in Redwood and Clear Western Red Cedar, for Any Post Size 3 1/2" up to Full 6"
- Non-Lighted, Matching Caps Available in the "Island" Style Vertical-Grain Cedar and Redwood!



• 2 NiCad Batteries Included

★ NANTUCKET SLIP OVER POST CAPS ★

**ALL
NANTUCKET
Post Caps Are...**

**Highest
Quality
Post Caps
Available!**

**Made
in the
USA!**

Made of the...
BEST GRADE
Cedar Redwood &
Western Red Cedar!

**#1
Seller!**

Federal (FC/F)



**#2
Seller!**

Island (IC/I)



**#3
Seller!**

Harbor (HC/H)



Monterey (MTC/MT)



Great Point (GPC/GP)



Newport (NWC/NW)



Seabreeze (SBC/SB)



Back Street (BC/B)



Beachwalk (BWC/BW)



**ALL Styles Available in the
Standard Sizes Below:**

3 1/2" x 3 1/2"	3 1/2" x 5 1/2"	3 3/4" x 3 3/4"
4" x 4"	4" x 6"	4 1/2" x 4 1/2"
4 3/4" x 4 3/4"	5" x 5"	5 1/2" x 5 1/2"
5 3/4" x 5 3/4"	6" x 6"	6 1/2" x 6 1/2"
7" x 7"	7 1/2" x 7 1/2"	8" x 8"
8 1/2" x 8 1/2"	9" x 9"	9 1/2" x 9 1/2"
	10" x 10"	

We Do Many Custom Sizes...
and there is not a post we
can't make a cap for.
Call for a Quote!

When Ordering...

Use the code next to the cap name,
followed by your actual post size.

C = Cedar
NO C = Redwood

If Adding a FINIAL...

You can specify for the cap to
be pre-drilled in the center for

"No Additional Cost"!

ADD a POST SKIRT...

To match your caps molding,
and put a finished look
at the base of your posts!

(see page 2)

**Made
in the
USA!**

Ordering Information:

For your convenience and to ensure accuracy you may place orders:

via email: info@nantucketpostcap.com • **via phone:** 1.888.758.7678 • **via fax:** 1.866.900.7678

Please make sure to include your contact information and any applicable job name or purchase order.

★ SPECIALTY SPECIES POST CAPS ★

AZEK Post Caps & Finials

Nantucket Post Cap Company is Offering a Selection of Post Caps and Finials by...

Though not as beautiful as our Redwood or Western Red Cedar products, **AZEK** offers an array of valuable benefits!

- Impervious to Insects and Moisture
- Will Not Rot, Split, Twist or Warp



AZEK Offers an Astounding **25 Year Warranty** on Material Defects!

- Looks & Feels Like White Painted Wood
- Accepts Paint Easily for a Custom Color

Many Available Sizes to Choose From... 3 1/2" up to 8"



Federal Post Cap



Ball Finial Cap



Island Post Cap

Mahogany Federal & Island Post Caps

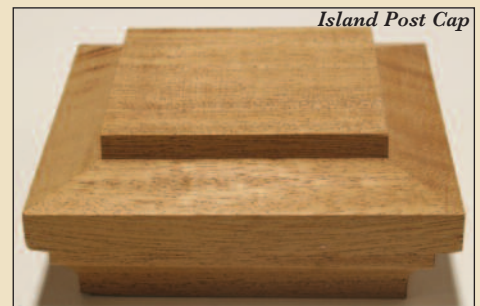
Our High Quality Federal & Island Post Caps are Made from Kiln Dried African Mahogany!



Federal Post Cap

MAHOGANY POST CAP CODES		
ACTUAL POST SIZE	FEDERAL	ISLAND
3 1/2" x 3 1/2"	FM312	IM312
3 3/4" x 3 3/4"	FM334	IM334
4" x 4"	FM4	IM4
4 1/2" x 4 1/2"	FM412	IM412
4 3/4" x 4 3/4"	FM434	IM434
5" x 5"	FM5	IM5
5 1/2" x 5 1/2"	FM512	IM512
5 3/4" x 5 3/4"	FM534	IM534
6" x 6"	FM6	IM6
6 1/2" x 6 1/2"	FM612	IM612
7" x 7"	FM7	IM7
7 1/2" x 7 1/2"	FM712	IM712
8" x 8"	FM8	IM8

CUSTOM SIZES AVAILABLE, CALL FOR A QUOTE!



Island Post Cap

IPE Federal Post Cap



Our High Quality IPE Post Caps Provide Years of Protection to Your Posts!

Also, Available in... Island Post Cap Design!

- Made of IPE Wood

CUSTOM SIZES AVAILABLE, CALL FOR A QUOTE!

IPE FEDERAL POST CAP	
ACTUAL POST SIZE	POST CAP CODES
3 1/2" x 3 1/2"	FI312
3 1/2" x 5 1/2"	FI312512
4" x 6"	FI46
3 3/4" x 3 3/4"	FI334
4" x 4"	FI4
4 1/2" x 4 1/2"	FI412
4 3/4" x 4 3/4"	FI434
5" x 5"	FI5
5 1/2" x 5 1/2"	FI512

For IPE Posts larger than 5 1/2" we recommend capping them with our mahogany options.

★ Post Cap Finial Care ★

PREPARATION... All Nantucket Post Cap finials are constructed of quality laminated clear Redwood and Western Red Cedar. They should be sealed **BEFORE** installation with an oil base primer, paint, stain or preservative to ensure long life. These should be applied to all surfaces **INCLUDING** the base.

★ Finial Installation ★

INSTALLATION... Finials are pre-drilled and are shipped with lag screws for easy installation after sealing. The screws should be inserted first into the base of the finial using a pair of pliers around the smooth section (not the threads). Then thread the finial with mounted lag screw into the post. Pre-drilling the top of the post is optional and may aid in the installation. Exterior caulking material can be applied to the base to ensure a tight fit if desired.

ALL FINIALS MUST HAVE A PROPER SEALER AND/OR PAINT APPLIED TO PREVENT CRACKING.

★ NANTUCKET METAL POST CAPS ★

Halifax



Slip Over Post Cap



Pewter

Our Halifax Flat Top is a Full Metal Post Top which Provides a Traditional Look and Low Maintenance for Your Property!

Available in Black & Pewter, Fits Most Common Post Sizes.

WHEN ORDERING USE THE FOLLOWING CODES:

- WOOD CODES: HFC = Cedar • HFR = Redwood
- METAL COLOR CODES: B = Black • P = Pewter
- EXAMPLE ORDER CODE: HFC-B = Cedar/Black

Then Add What Post Size You Would Like... *It's That EASY!*

MANY AVAILABLE SIZES TO CHOOSE FROM:

3 1/2" x 3 1/2" 3 3/4" x 3 3/4" 5 1/2" x 5 1/2" 5 3/4" x 5 3/4" 6" x 6"

East & West Creek



East Creek Slip Over Post Cap

WHEN ORDERING USE THE

FOLLOWING CODES:

ECC = Cedar
EC = Redwood
(Add Post Size)

4 Metal Options to Choose From...

- Copper • Black
- Pewter • Stainless

West Creek

Slip Over Post Cap

WHEN ORDERING USE THE

FOLLOWING CODES:

WCC = Cedar
WC = Redwood
(Add Post Size)



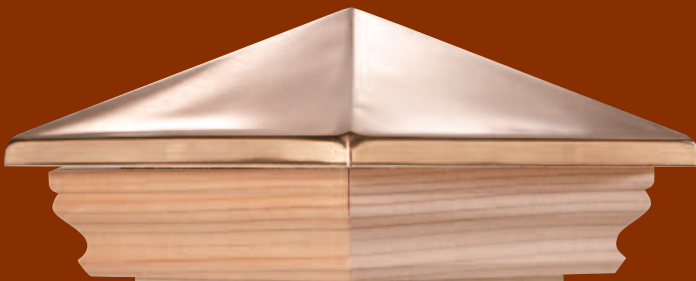
4 Metal Options to Choose From...

- Copper • Black
- Pewter • Stainless

MANY AVAILABLE SIZES TO CHOOSE FROM:

3 1/2" x 3 1/2"	3 1/2" x 5 1/2"	3 3/4" x 3 3/4"	4" x 4"
4" x 6"	4 1/2" x 4 1/2"	4 3/4" x 4 3/4"	5" x 5"
5 1/2" x 5 1/2"	5 3/4" x 5 3/4"	6" x 6"	6 1/2" x 6 1/2"
7" x 7"	7 1/2" x 7 1/2"	8" x 8"	8 1/2" x 8 1/2"
9" x 9"	9 1/2" x 9 1/2"	10" x 10"	

Cambridge



Beautify Your Property with... Full Metal Decorative Post Caps!

Slip Over Post Cap



Stainless

Pewter

Black

WHEN ORDERING USE THE FOLLOWING CODES:

- WOOD CODES: CC = Cedar • C = Redwood
- METAL COLOR CODES: B = Black • C = Copper • P = Pewter • S = Stainless
- EXAMPLE ORDER CODE: CC-B = Cedar/Black

Then Add What Post Size You Would Like... *It's That EASY!*

MANY AVAILABLE SIZES TO CHOOSE FROM:

3 1/2" x 3 1/2"	3 3/4" x 3 3/4"	4" x 4"	4 1/2" x 4 1/2"
4 3/4" x 4 3/4"	5" x 5"	5 1/2" x 5 1/2"	5 3/4" x 5 3/4"
6" x 6"	6 1/2" x 6 1/2"	7" x 7"	7 1/2" x 7 1/2"
8" x 8"	8 1/2" x 8 1/2"	9" x 9"	9 1/2" x 9 1/2"
		10" x 10"	

Metal Post Point

Our Sturdy Metal Post Points Come in a Variety of Metal Choices...

- Copper • Black • Pewter • Stainless



Our "REAL" Copper Metal Post Point will Turn to a Rich Patina Finish Over Time!



AVAILABLE METAL CHOICES IN THESE POST SIZES:

- COPPER: 3 1/2", 3 1/2" x 5 1/2", 5 1/2", 6 3/4", 8", 9 1/2", 11 1/2"
- BLACK: 3 1/2", 5 1/2", 6 3/4", 8"
- PEWTER: 3 1/2", 5 1/2", 6 3/4", 8"
- STAINLESS: 5 1/2"

★ NANTUCKET NON-SLIP OVER POST CAPS ★

South Hampton (SHC/SH)

Nantucket (NKC/NK)

Martha's Vineyard



NOTE: Post caps have NO molding.

NOTE: Post caps have NO molding.

ALL Styles Available in the Standard Sizes Below:

3 1/2" x 3 1/2"	3 1/2" x 5 1/2"	3 3/4" x 3 3/4"
4" x 4"	4" x 6"	4 1/2" x 4 1/2"
4 3/4" x 4 3/4"	5" x 5"	5 1/2" x 5 1/2"
5 3/4" x 5 3/4"	6" x 6"	6 1/2" x 6 1/2"
7" x 7"	7 1/2" x 7 1/2"	8" x 8"
8 1/2" x 8 1/2"	9" x 9"	9 1/2" x 9 1/2"
	10" x 10"	

We Do Many Custom Sizes...
and there is not a post we can't make a cap for.
Call for a Quote!

When Ordering...

Use the code next to the cap name, followed by your actual post size.

C = Cedar
NO C = Redwood

If Adding a FINIAL...

You can specify for the cap to be pre-drilled in the center for "No Additional Cost"!

ADD a POST SKIRT...

To match your caps molding, and put a finished look at the base of your posts!
(see page 2)



Nantucket Wood Finials

Acorn
(DT3000C)



• Available Size: 3 1/4"W x 5 3/4"H
• Made of Red Cedar

Small Colonial
with Groves (DT9450C)



• Available Size: 3 1/4"W x 5 1/2"H
• Made of Red Cedar
Available without Groves!
(DT9455C)

Large Colonial
with Groves (DT9400C)



• Available Size: 4 1/4"W x 6"H
• Made of Red Cedar
Available without Groves!
(DT9555C)

Jumbo Colonial
with out Groves (DT60C)



• Available Size: 5"W x 6"H
• Made of Red Cedar
Available with Groves!
(DT65C)

XL Colonial
with Groves (DT75C)



• Available Size: 5 1/2"W x 6"H
• Made of Red Cedar

French Gothic
(DT77C)



• Available Size: 4"W x 6"H
• Made of Red Cedar

French Gothic
(CFG6)



• Available Size: 6"W x 8"H
• Made of Red Cedar

Cap 55
(CAP55C)



• Available Size: 5"W x 1 3/16"H
• Made of Red Cedar

Roman Cap



• Available Sizes & Codes:
4"W x 3/4"H (ROB412C)
5"W x 3/4"H (ROB512C)
8"W x 3/4"H (ROB8C)
• Made of Red Cedar

Copper & Stainless Metal Finials



Federal Copper Globe

Available Sizes...
• Fits 4"x 4" Wood Actual 3 5/8" (CFG0358W)
• Fits 6"x 6" Wood Actual 5 1/2" (CFG0534W)
• 3 1/2" Diameter without Base (CFGNB4)



Copper Pineapple

Available Sizes...
• Fits 4"x 4" Wood Actual 3 5/8" (CPP0358W)
• Fits 6"x 6" Wood Actual 5 3/8" (CPP0534W)
• 3 1/2" Diameter without Base (CPPNBMD)



Metal Pyramid

Available Sizes...
• Fits 3 5/8" (0358W)
• Fits 4 5/8" (0418W)
• Fits 4 1/2" (0458W)
• Fits 3 5/8" x 5 5/8" (4X6W)
• Fits 5 3/4" (0534W)
• Fits 7 5/8" (0758W)
Metal Options...
• Copper (code = CPY)
• Stainless (code = SPY)

★ NANTUCKET FINIALS ★

Nantucket Wood Finials

The Possibilities are Endless with these Nantucket Finials!



Acorn ★



Eel Point



Cobblestone



Nantucket Ball



Quaise

ITEM NAME	POST SIZE	FINIAL SIZE
ACORN (NFA)	4"	3 1/4" W x 4 1/8" H x 3 1/4" Base Dia.
	5"	4 1/4" W x 5 1/8" H x 4 1/4" Base Dia.
	6"	5 1/4" W x 6 1/8" H x 5 1/4" Base Dia.
COBBLESTONE (NFCB)	4"	2 7/8" W x 3 1/8" H x 2" Base Dia.
	5"	3 1/4" W x 4" H x 2 1/2" Base Dia.
	6"	4 1/2" W x 5 1/4" H x 2 1/2" Base Dia.
EEL POINT (NFE)	4"	3 1/2" W x 5 1/2" H x 3 1/2" Base Dia.
	5"	4 3/8" W x 7" H x 4 3/8" Base Dia.
	6"	5 1/2" W x 8 1/2" H x 5 1/2" Base Dia.
NANTUCKET BALL (NFB)	4"	3 1/8" W x 3" H x 1 3/4" Base Dia.
	5"	4 1/4" W x 3 7/8" H x 2 1/4" Base Dia.
	6"	5" W x 4 1/4" H x 2 3/4" Base Dia.
QUAISE (NFQ)	4"	3 1/4" W x 4 1/2" H x 3 1/16" Base Dia.
	5"	4 1/8" W x 6 1/8" H x 4 1/8" Base Dia.
	6"	5 1/4" W x 7 3/8" H x 5 1/16" Base Dia.

All Nantucket Wood Finials Available in Cedar Only.

The Boston Turning Works Finials will Add a Unique Elegance and Class to Your Property!



F101



F102



F103



F104



F105



F106



Sphere

ITEM NAME	POST SIZE	FINIAL SIZE
F101	4"	3 3/4" W x 7" H x 2 3/4" Base Dia.
	5"	4 3/4" W x 8 7/8" H x 3 3/8" Base Dia.
	6"	5 1/4" W x 10 3/4" H x 4" Base Dia.
	8"	7 1/2" W x 14" H x 5 1/2" Base Dia.
F102	4"	3 3/4" W x 6 3/8" H x 2 3/8" Base Dia.
	5"	4 3/4" W x 8" H x 3 3/8" Base Dia.
	6"	5 3/4" W x 9 3/4" H x 4 3/8" Base Dia.
	8"	7 1/2" W x 13" H x 6" Base Dia.
F103	4"	3 3/4" W x 8" H x 2 3/8" Base Dia.
	5"	4 3/4" W x 9 3/4" H x 3" Base Dia.
	6"	5 3/4" W x 12" H x 3 3/4" Base Dia.
	8"	7 1/2" W x 15 1/2" H x 5" Base Dia.
F104	4"	3 3/4" W x 4 3/4" H x 2 1/4" Base Dia.
	5"	4 3/4" W x 6" H x 3" Base Dia.
	6"	5 3/4" W x 7 1/4" H x 3 1/2" Base Dia.
	8"	7 1/2" W x 9 1/2" H x 4 1/2" Base Dia.
F105	4"	3 3/4" W x 5 1/8" H x 2 3/8" Base Dia.
	5"	4 3/4" W x 6 1/2" H x 3" Base Dia.
	6"	5 3/4" W x 7 3/4" H x 3 1/2" Base Dia.
	8"	7 1/2" W x 10 1/2" H x 4 3/8" Base Dia.
F106	4"	3 3/4" W x 4 3/4" H x 2 1/4" Base Dia.
	5"	4 3/4" W x 6" H x 3" Base Dia.
	6"	5 3/4" W x 7 1/4" H x 3 1/2" Base Dia.
	8"	7 1/2" W x 9 1/2" H x 4 1/2" Base Dia.
SPERE	4"	3 3/4" W x 3 3/4" H - No Base
	5"	4 3/4" W x 4 3/4" H - No Base
	6"	5 3/4" W x 5 3/4" H - No Base
	8"	7 1/2" W x 7 1/2" H - No Base

All Boston Turning Works Finials Available in Spanish Cedar Only.



★ NANTUCKET ARBORS ★

Nantucket Arbor

These Beautifully Crafted Arbors are Incredibly Easy to Build & Install within Your Landscape Design!

**CUSTOM
SIZE
Arbor Openings
Available!**



Complete Arbor Includes:

- 4 Pre-Drilled Slip Over Post Caps with $\frac{5}{8}$ " Doweled Pins
- Installation Instructions
- Spindles - Square 2 x 2 x 22" with Doweled Ends
- 4 Posts 4 x 4 x 8 (Net $3\frac{1}{2}$ " x $3\frac{1}{2}$ " x 8')
- 2 Arbor Arches - 4 x 4 (Net $3\frac{1}{2}$ " x $3\frac{1}{2}$ "')

Choice of: Square or Diagonal Lattice (Overall Size $21\frac{1}{2}$ " x $47\frac{1}{2}$ "')

Arbor Sizes: 3', $3\frac{1}{2}$ ', 4', 5', 6', 8' (in Natural Clear Western Red Cedar)

NOTE: Bottom Post Dressing sold separately.

Arbor Arches can be purchased separately!

Arbor Arch Includes:

- 2 Arches (Net $3\frac{1}{2}$ " x $3\frac{1}{2}$ "')
- 4 Slip Over Post Caps
- 22" Doweled Connecting Spindles

Arbor Sizes: 3', $3\frac{1}{2}$ ', 4', 5', 6', 8'



Single Halo Arch Includes:

- 1 Red Cedar Arbor Arch

Arch Sizes: 3', $3\frac{1}{2}$ ', 4', 5', 6', 8'



Brant Point Arbor



Complete Arbor Includes:

- Spindles - Square 2" x 2" x $29\frac{1}{2}$ " with Doweled Ends
- 4 Pre-Drilled Slip Over Post Caps with $\frac{5}{8}$ " Doweled Pins
- Lattice - Solid Square Panels $29\frac{1}{2}$ " x $55\frac{1}{2}$ "
- Installation Instructions
- 4 Posts - 5 x 5 x 8 (Net $4\frac{3}{8}$ " x $4\frac{3}{8}$ " x 8')
- 2 Arbor Arches - 5 x 5 (Net $4\frac{3}{8}$ " x $4\frac{3}{8}$ "')

Arbor Sizes: 3', $3\frac{1}{2}$ ', 4', 5', 6', 8' (in Natural Clear Western Red Cedar)

Choice of: Square or Diagonal Lattice

NOTE: Bottom Post Dressing sold separately.

Arbor Arches can be purchased separately!

Arbor Arch Includes:

- 2 - 5 x 5 Arches (Net $4\frac{3}{8}$ " x $4\frac{3}{8}$ "')
- 30" Doweled Connecting Spindles
- 4 Slip Over Post Caps

Arbor Sizes: 3', $3\frac{1}{2}$ ', 4', 5', 6', 8'



Single Halo Arch Includes:

- 1 Red Cedar Arbor Arch

Arch Sizes: 3', $3\frac{1}{2}$ ', 4', 5', 6', 8'



Beachside Arbor



Complete Arbor Includes:

- Installation Instructions
- 2 Elliptical Arches - 5 x 5 (Net $4\frac{3}{8}$ " x $4\frac{3}{8}$ "')
- 4 Posts 5 x 5 x 8 (Net $4\frac{3}{8}$ " x $4\frac{3}{8}$ " x 8')
- Doweled Connecting Spindles
- Lattice - Solid Square Panels Overall Size $29\frac{1}{2}$ " x $55\frac{1}{2}$ "
- 4 Pre-Drilled Slip Over Post Caps with $\frac{5}{8}$ " Doweled Pins

Arbor Sizes: 4', 5', 6', 8' (in Natural Clear Western Red Cedar)

Choice of: Square or Diagonal Lattice

NOTE: Bottom Post Dressing sold separately.

Arbor Arches can be purchased separately!

Arbor Arch Includes:

- 2 - 5 x 5 Red Cedar Arches
- 4 Slip Over Post Caps
- 30" Doweled Connecting Spindles

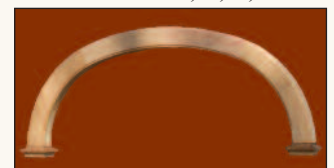
Arbor Sizes: 4', 5', 6', 8'



Single Halo Arch Includes:

- 1 Red Cedar Arbor Arch

Arch Sizes: 4', 5', 6', 8'



★ NANTUCKET PERGOLAS ★

Nobadeer Arbor

*These Arbors and Pergolas
Add an Elegant Charm
to Your Home Landscape Creation
and are Incredibly Easy to Build and Install!*

Complete Arbor Includes:

- 2 Slip Over Post Caps
- Installation Instructions
- 4 Arbor Cross Arm Braces
- 21 1/2" Doweled Connecting Spindles
- 2 Arbor Arches - 4 x 4 (Net 3 1/2" x 3 1/2")
- 2 Posts - 4 x 4 x 8 (Net 3 1/2" x 3 1/2" x 8')

Arbor Sizes: 3', 3 1/2', 4', 5', 6' (in Natural Clear Western Red Cedar)

NOTE: Surfside Gate sold separately.



Arbor Arches can be purchased separately!

Arbor Arch Includes:

- 2 - 4 x 4 Arches (Net 3 1/2" x 3 1/2")
- 22" Doweled Connecting Spindles
- 4 Slip Over Post Caps

Arbor Sizes: 3', 3 1/2', 4', 5', 6'



Single Halo Arch Includes:

- 1 Red Cedar Arbor Arch

Arch Sizes: 3', 3 1/2', 4', 5', 6'



Seaside Pergola

Complete Pergola Includes:

- Single Halo Arch
- 2 Slip Over Post Caps
- Pergola Top • Installation Instructions
- 4 Posts - 4 x 4 x 8 (Net 3 1/2" x 3 1/2" x 8')

Pergola Sizes: 3', 3 1/2', 4', 5', 6' (in Natural Clear Western Red Cedar)

NOTE: Surfside Gate sold separately.



*More Pergolas Available,
Please Refer to Our Website!*

Pergola Top & Arch can be purchased separately!

Pergola Top Includes:

- 2 Bases • 5 Rails and Cross Pieces

Top Sizes: 3', 3 1/2', 4', 5', 6'

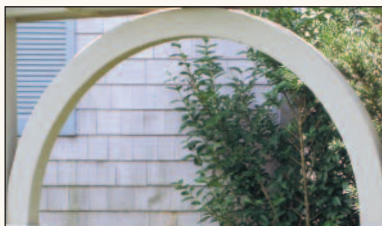


Single Halo Arch Includes:

- 1 Red Cedar Arbor Arch

Arch Sizes:

3', 3 1/2', 4', 5', 6'



★ NANTUCKET GATES ★

Country Estate Gate

- Available Width Sizes: 3½', 4', 5', 6'
- Made of Natural Clear Red Cedar
- Posts Sold Separately

CALL FOR **CUSTOM SIZES!**



Hardware
Not Included

Outside Gate Post Height:

- 3' Gate = 52½"
- 3½' Gate = 54½"
- 4' Gate = 56¾"
- 5' Gate = 61¾"
- 6' Gate = 66½"

Inside Gate Center Height:

= 41" Tall for ALL Sizes

High Tide Gate

- Available Width Sizes: 3½', 4', 5', 6'
- Made of Natural Clear Red Cedar
- Posts Sold Separately

CALL FOR **CUSTOM SIZES!**



Hardware
Not Included

Outside Gate Post Height:

- 3' Gate = 56¾"
- 3½' Gate = 54½"
- 4' Gate = 54½"
- 5' Gate = 54½"
- 6' Gate = 66½"

Inside Gate Center Height:

= 41" Tall for ALL Sizes

South Shore Gate

- Available Width Sizes: 3½', 4', 5', 6'
- Made of Natural Clear Red Cedar
- Posts Sold Separately

CALL FOR **CUSTOM SIZES!**



Hardware
Not Included

Outside Gate Post Height:

- 3' Gate = 56¾"
- 3½' Gate = 44½"
- 4' Gate = 54½"
- 5' Gate = 54½"
- 6' Gate = 59¾"

Inside Gate Center Height:

= 41" Tall for ALL Sizes

Surfside Gate

- Available Width Sizes: 3½', 4', 5', 6'
- Made of Natural Clear Red Cedar
- Posts Sold Separately

CALL FOR **CUSTOM SIZES!**



Hardware
Not Included

Outside Gate Post Height:

- 3½' Gate = 49½"
- 4' Gate = 49½"
- 5' Gate = 56¾"
- 6' Gate = 63½"

Inside Gate Center Height:

= 38½" Tall for ALL Sizes

Picket Fence System



Build Your Own... "Fence System"!

Complete System Includes:

- 35 Pyramid Pointed Western Red Cedar Pickets (4 - 48", 2 - 46", 2 - 44", 27 - 42")
- 2 - 8' long Western Red Cedar Backer Rails

You can easily assemble each system into 8' sections!

SOLD SEPARATELY...

- Pickets 2" x 2" x 48" (12 to a bundle)
- 8' Backer Rails (sold individually)

★ NANTUCKET DECORATIVE ACCESSORIES ★

Nantucket Window Boxes

Add some charm to your windows with our new window boxes! Scalloped or flush tops with braces included.

- Available Lengths: 2', 3', 4'
- Made of Western Red Cedar
- CALL FOR **CUSTOM SIZES!**



Planter Boxes



Our planter boxes will be a beautiful addition to your deck or patio or even in the home!

- Available Size: 15"W x 15"D x 15³/₄"H
- Made of Western Red Cedar

Please order diagonal or straight sides.

CALL FOR CUSTOM SIZES!



Adirondack Chair

Our chair is designed for relaxing outdoors on your deck or by your pool or pond!

- Made of Western Red Cedar
- Chair is Shipped Unassembled



Red Cedar Trellis Panels

This Solid Red Cedar Trellis Features Half Lapped Joints...

BUILT LIKE NO OTHER TRELLIS!

Also Available:

- 2 PANE (12" x 71")
- 10 PANE (55" x 71")

ANY SIZE PANELS AVAILABLE, PLEASE CALL FOR A CUSTOM QUOTE.

Slat Sizes:

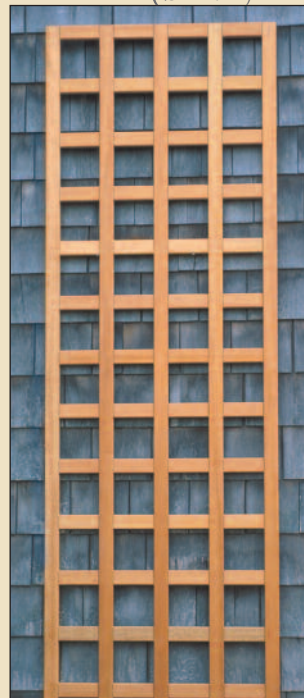
- 1¹/₂" wide by 3/4" thick with 4" openings



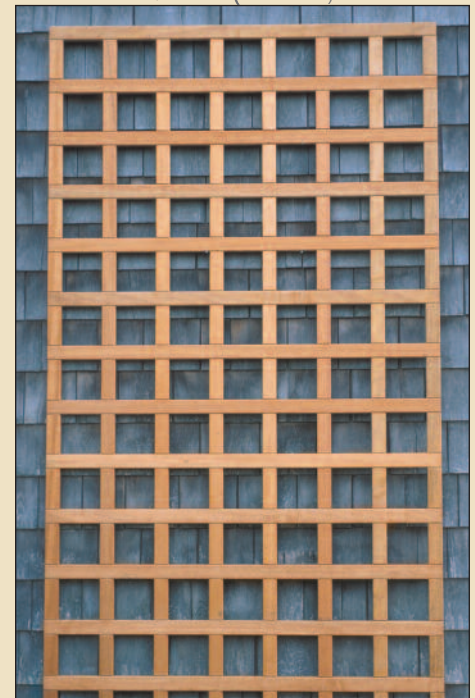
3 PANE (17¹/₂" x 71")



4 PANE (23" x 71")



7 PANE (39" x 71")



★ NANTUCKET LANTERN POSTS ★

Raised Panel 8x8

Finial Top 5x5

Fluted 6x6



8 x 8 x 72"
Lantern Posts
have 1 1/8" thick
sidewall with a
4 1/2" x 4 1/2"
hollow center
to retro-fit.



Optional
Fluted Base!



x96" Solid
or 76" Hollow
to Retro-Fit.

New Bold 6x6x8'

Fluted 8x8 Lantern



Includes
Raised Panel
Base!



8 x 8 x 72"
Lantern Posts
have 1 1/8" thick
sidewall with a
4 1/2" x 4 1/2"
hollow center
to retro-fit.

**NEW
PRODUCTS!**

★ NANTUCKET LANTERN POSTS ★

NEW PRODUCTS!

Estate Sign Post

The *Lantern Posts* Provides an Impressive, Inexpensive, Natural Wood Lantern Post Option...

★ *Sure to Impress!* ★

- ALL Primed White with Exterior Solid Color Stain for Immediate Installaiton
- Estate Sign Posts can be Ordered Complete, or Just Add a Brace and Sign Arm to a Lantern Post

MANY CUSTOM OPTIONS AVAILABLE to Fit Specific Needs!

CALL with Any Questions.



Add a Brace and Sign Arm to Lantern Post!

Also Available in PVC (3/4" Azek)

Plain w/Cap 5x5x8'

Plain 5x5x8'

Turned 5x5x8'



Wire Ready!



Wire Ready!



Wire Ready!



★ NANTUCKET MAILBOX POSTS ★

New England 4x4x6

All Come Primed White for Immediate Installation!

All Styles Available in...

- 4 x 4's Come 6' Long
- 5 x 5's Come 7' Long - Ready to Bury!

All Mailbox Post Design Options...

- Post Sleeve / No Post Sleeve
- Raised Panel OR Fluted
- Pyramid Post Cap Included
- Mailbox Not Included



NEW PRODUCTS!

New England 5x5x7

All Come Primed White for Immediate Installation!

All Styles Available in...

- 4 x 4's Come 6' Long
- 5 x 5's Come 7' Long - Ready to Bury!

All Mailbox Post Design Options...

- Post Sleeve / No Post Sleeve
- Raised Panel OR Fluted
- Pyramid Post Cap Included
- Mailbox Not Included



Gardener 5x5x7

All Come Primed White for Immediate Installation!

All Styles Available in...

- 4 x 4's Come 6' Long
- 5 x 5's Come 7' Long - Ready to Bury!

All Mailbox Post Design Options...

- Post Sleeve / No Post Sleeve
- Raised Panel OR Fluted
- Pyramid Post Cap Included
- Mailbox Not Included



Dualie 5x5x7

All Come Primed White for Immediate Installation!

All Styles Available in...

- 4 x 4's Come 6' Long
- 5 x 5's Come 7' Long - Ready to Bury!

All Mailbox Post Design Options...

- Post Sleeve / No Post Sleeve
- Raised Panel OR Fluted
- Pyramid Post Cap Included
- Mailbox Not Included



Post Sleeves

RAISED PANEL POST SLEEVE



Raised on Two Sides!

Our Quality Post Sleeves are Made from the Best Grade of Clear, All Heart, Vertical-Grain Cedar!

- Outside Dimensions: 5" x 5" OR 7" x 7"
- Available Heights: 4', 5', 6', 7', 8'
- Made from the Best Grade of Clear, Western Red Cedar

Accessories are sold NATURAL, and can be treated, painted or stained.

CUSTOM SIZES AVAILABLE, PLEASE CALL FOR A QUOTE.

NOTE: Post Caps and Post Dressings are sold separately.

NANTUCKET is Known for... QUALITY CUSTOMIZATION!

FLUTED POST SLEEVES



Fluted on Two Sides!

Nantucket Landscape Garden Bridge



Our bridges are sturdy and will look great in your backyard or garden or even over your fish pond or stream!

- Available Sizes: 4'L x 2'W, 5'L x 2½'W, 6'L x 2½'W
- Made of Western Red Cedar

CALL FOR CUSTOM SIZES!

Bottom Post Dressing

Our Quality Bottom Post Dressing and Post Skirt is Made from the Best Grade of Clear, All Heart, Vertical-Grain Cedar and Redwood!

- Many sizes to fit your posts
- Patterns Match the Dressing of Your Post Caps!



Bottom Post Dressing

Accessories are sold NATURAL, and can be treated, painted or stained.

Shipped unassembled, please specify if you would like shipped assembled.

Decorative Base Available in Island or Federal Molding!

Post Skirt



Post Skirt

HIDE IMPERFECTIONS!

NEW!

AZEK Post Trim NOW AVAILABLE... in Same Styles as Shown Above!



Custom... NANTUCKET POST CAPS!



Call Today... 1.888.758.7678

CUSTOM WOOD Post Caps!



Did You Know...?

We stock many types of wood species at all times...

- Redwood
 - African Mahogany
 - Western Red Cedar
 - Ipe • Red Oak • Azek
- are all in stock ready to manufacture!

If we cannot source your wood, UPS it to us, and we'll turn it into caps!

Did You Know...?

We custom make post caps - it is our specialty at **NANTUCKET POST CAPS!**

On a Daily Basis, We Are Custom Building Caps for the Most Odd Sized Posts.

Post sizes ranging from...
4" x 8" to 6" x 12" to 12" x 24" columns.

There is NOT a Square Post We Cannot Fit a Cap On!

Please contact us for your next custom post cap job. We're happy to quote even as small of a job as 1 post!

ANY SIZE, MANY SPECIES, Numerous Styles of Post Caps!



★ THE NANTUCKET POST CAP ★

We Have a Large Selection of Post Caps and Finial Styles, Along with Our Many Other Attractive Products, in which can be Customized to Fit Your Landscaping Design Needs!

Our Materials... All of our post caps are available in Clear, Vertical Grain, Kiln-Dried, Redwood and Clear Western Red Cedar. These woods are known for their durability and beauty. Cedar also has a very long standing, strong resistance to mold and mildew. It's low density makes it less likely to swell, warp, cup or twist, compared to other soft and hard woods. Due to the caps being installed horizontally on top of the posts, they receive the most sun exposure. So even though you may leave a cedar fence to weather naturally, we highly recommend treating not only the cedar caps, but all wood species caps. We recommend all Nantucket Post Caps be sealed BEFORE installation with an exterior urethane, stain or paint to ensure long life. These should be applied to all surfaces INCLUDING inside and under the base where the cap rests on the post. With cedar you can find many semi-transparent stains to keep the cedar look while protecting the caps. Azek caps look like wood, but do not have any of the warping issues. You must paint them, however, to avoid the exposed cells from fading to an off-white color.

Please Call Us if You Have Further Questions Regarding Treatment or Protection of the Caps!

Our Construction... Slip over caps are crafted using a five-piece construction, with galvanized V-nails in each corner of the molding. Twelve or more stainless steel staples are used to permanently fasten the molding to the underside of our post cap.

Our Installation... For a nail-free look, simply apply an exterior marine adhesive, such as 3M 5200, to the top of the post and slip the post cap over, straighten and walk away! (Stainless steel finish nails may be used).

Our Guarantee... All molding styles are generally interchangeable. If you don't see the size you need, please call us. We can generally make most sizes, and with most species of wood. All special orders require a 50% non-refundable credit card deposit and are non-returnable. There is no additional charge for individual post caps or partial cases. When ordering non case quantities, please add an A to the end of the order code. We accept phone, fax or online (*credit card only*) orders. Credit applications are available upon request. Returns must be made within 30 days of purchase to receive credit. All returned items are subject to a 20% restocking fee. Please measure carefully and call us if in doubt. We ship stock items within 2 business days of receiving a purchase order. All shipments are FOB Randolph, VT. Special services, call tags, expedited delivery and residential freight delivery are subject to an additional charge.

Thank You for Your Business!

Phone: 1.888.758.7678 ★ Fax: 1.866.900.7678 ★ P.O. Box 421, Randolph, VT 05060

OUR GUARANTEE... Nobody Beats Our Quality, Nobody Beats Our Service!